



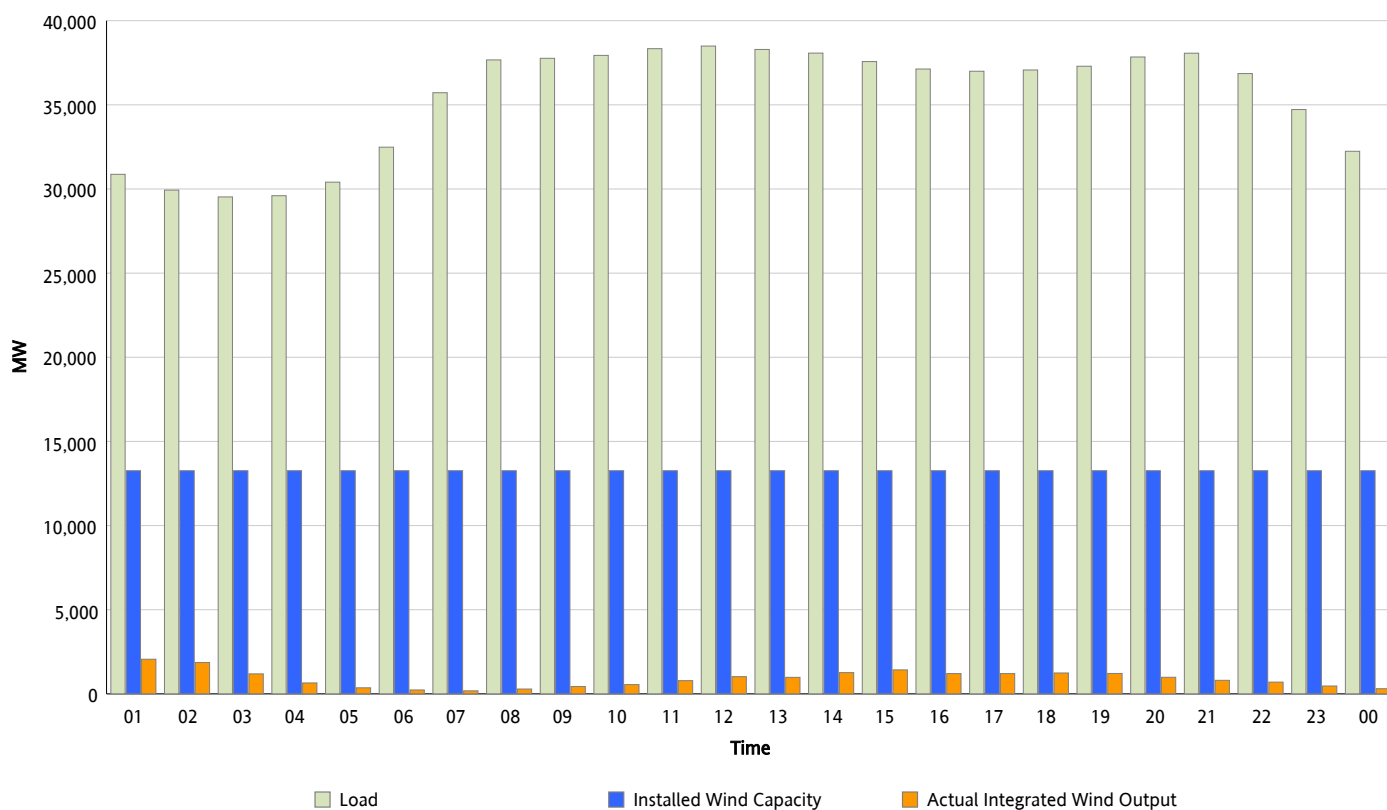
ERCOT Grid Operations

Wind Integration Report : 03/09/2015

Peak Load	38,494 MW
Load Peak Hour (HE)	12
Wind Over Peak	1,025 MW
Wind Record 02/19/15	11,154 MW
Max Wind Value*	2,146 MW
Wind Peak Time	00:32
Wind Integration %	6.96 %

Hourly Average Actual Load vs. Actual Wind Output

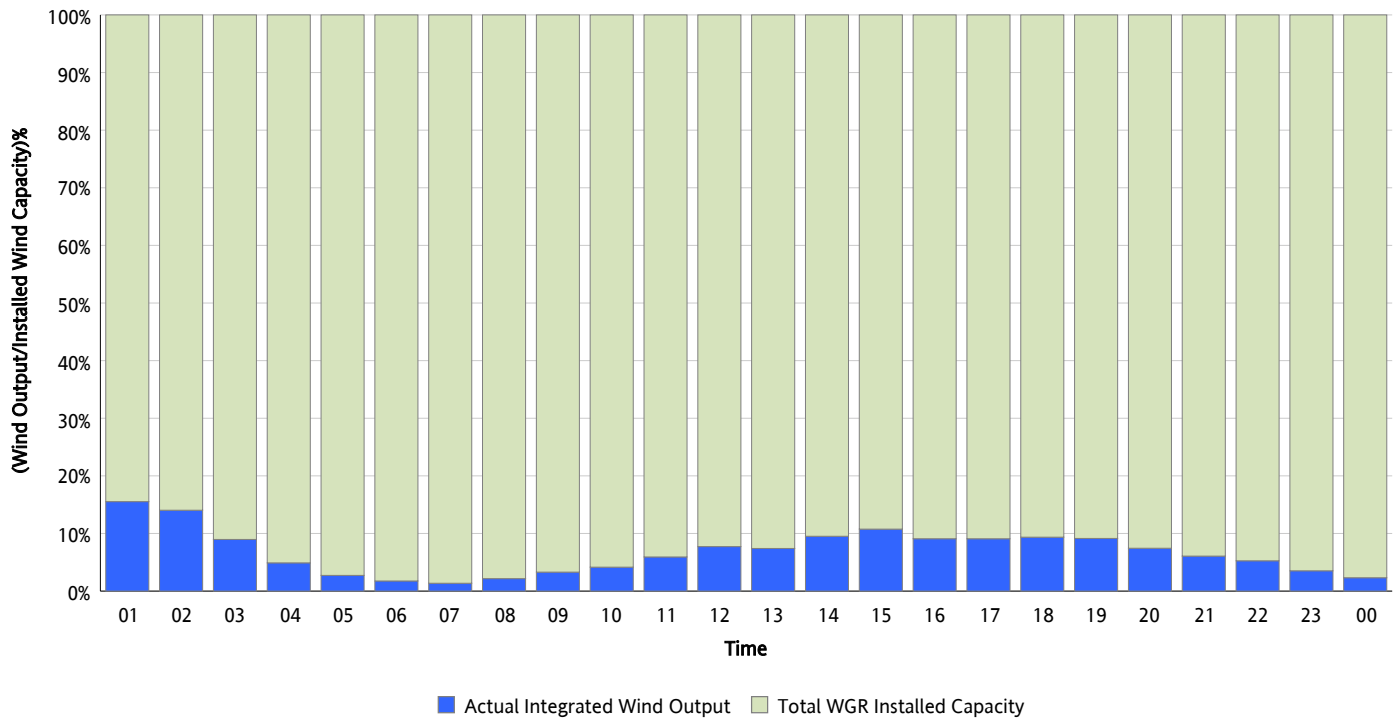
03/09/2015



** Wind Record and Wind Max represent instantaneous values and the rest of the values are integrated over the hour.
Capacity numbers used in the graphs are based on the expected commercial operation date of each Wind Generation Resource.*

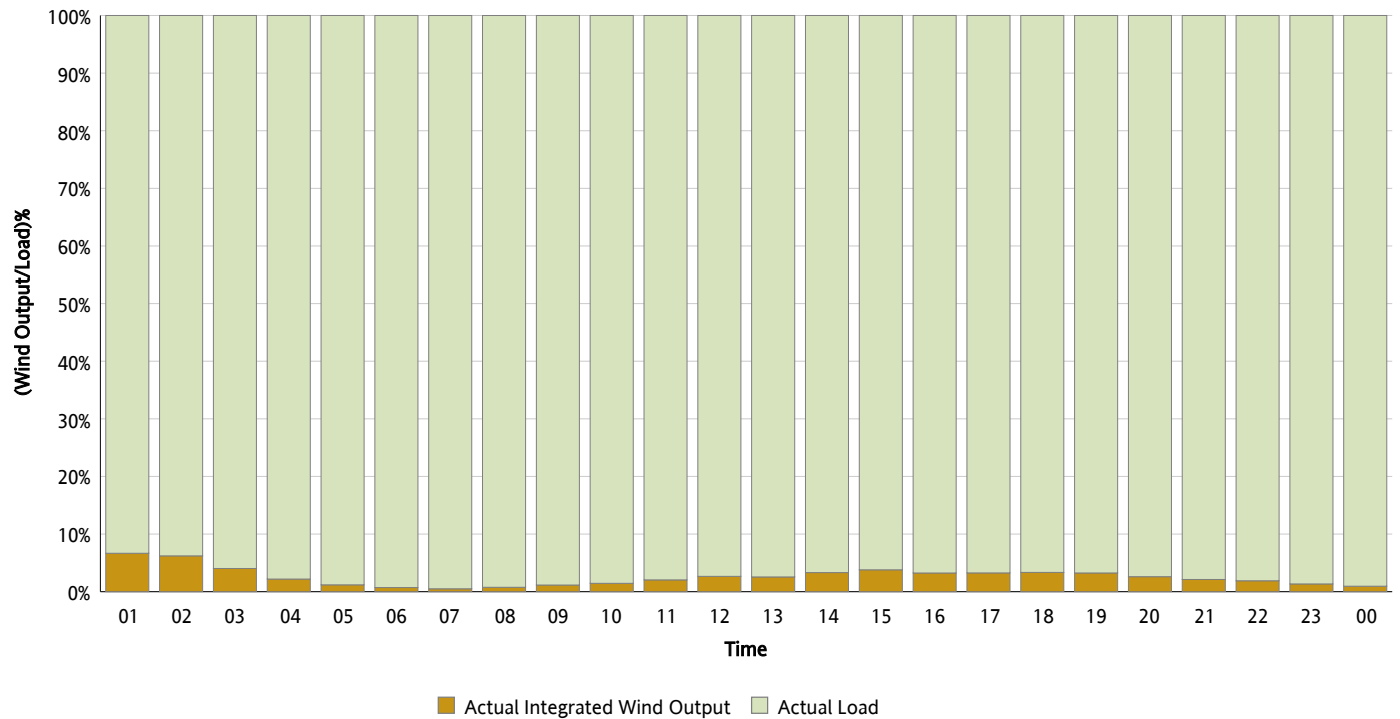
Actual Wind Output as a Percentage of the Total Installed Wind Capacity

03/09/2015



Actual Wind Output as a Percentage of the ERCOT Load

03/09/2015



ERCOT Load vs. Actual Wind Output

03/02/2015 - 03/09/2015

